

BATTISCOPA

SKIRTING

8x33,3 - 3 1/4"x13"

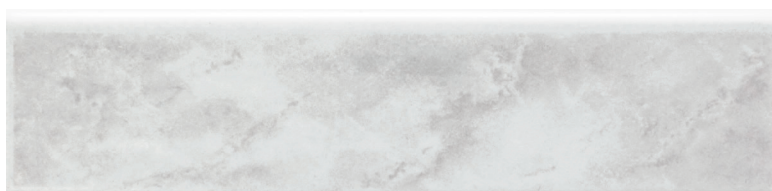
8x33,3 - 3 1/4"x13"

ARDESIA



S52634 ARDESIA

BG



S52663 BG 313

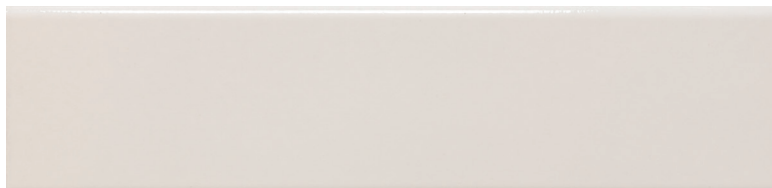


S52664 BG 314



S52661 BG 311

BIANCO



S52540 300 L



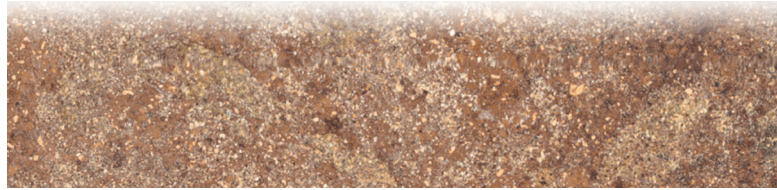
S52545 300 M

8x33,3 - 3 1/4"x13"

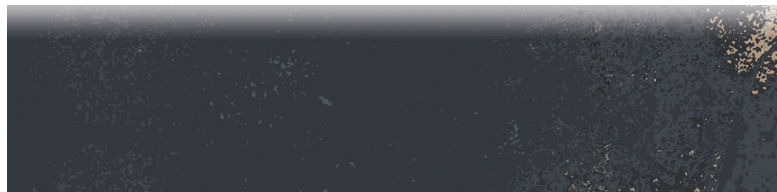
BR



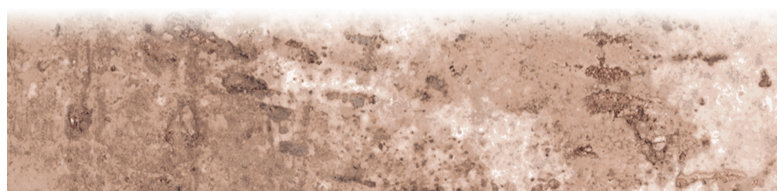
J85549 BR CREAM



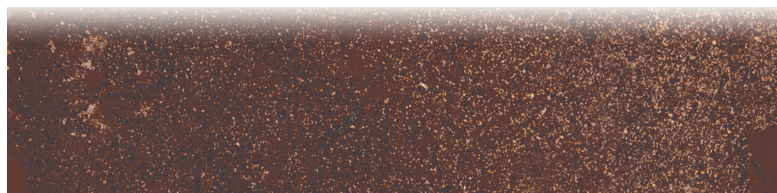
J85551 BR RED



J85550 BR DARK



J85552 BR RUST



J85553 BR UMBER

8x33,3 - 3 1/4"x13"

BT



S52668 BT 401



S52671 BT 404



S52673 BT 409

CM



S52678 CM 71



S52683 CM 73



S52686 CM 76



S52685 CM 75

8x33,3 - 3 1/4"x13"

ED



S52735 ED 1

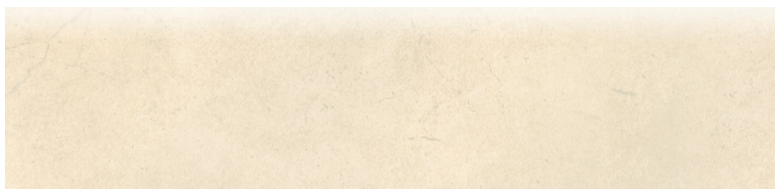


S52737 ED 3



S52736 ED 2

GL



S53705 GL 331



S53708 GL 334



S53706 GL 332

8x33,3 - 3 1/4"x13"

JL



J85432 JL BIANCO



J85433 JL GRIGIO



J85431 JL BEIGE



J85434 JL ROSSO

8x33,3 - 3 1/4"x13"

LMI



S53299 LMI 083



S53297 LMI 335



S53300 LMI 301



S53068 LMI KRETA

8x33,3 - 3 1/4"x13"

MO



S52926 M01



S52928 M03

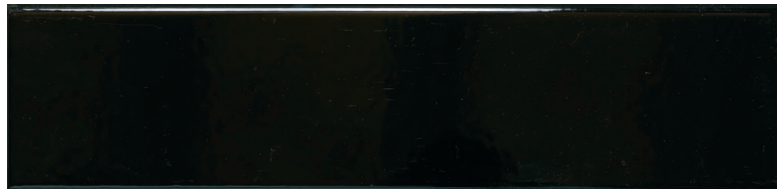


S52927 M02



S52929 M04

NERO



S52942 33 NERO

8x33,3 - 3 1/4"x13"

PDI



S54281 ALBIANO ROSSO



S54279 SALENTO GIALLO



S54280 VARANA GRIGIO



S54309 ASIAGO BIANCO

8x33,3 - 3 1/4"x13"

RB



S53053 RB 1



S53056 RB 3



S53054 RB 2



S53057 RB 4

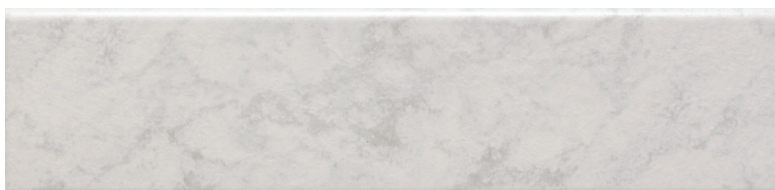
RO



S53066 RO 81



S53072 RO 83



S53070 RO 82

8x33,3 - 3 1/4"x13"

TC



S53150 TC7

VINTAGE



S52554 325



S52562 333



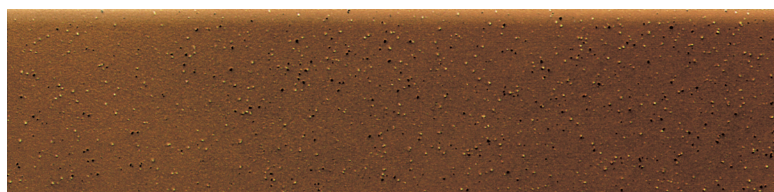
S52568 335



S52558 332





S52564 334



S52583 369

Gres Porcellanato

Porcelain Stoneware - Gres Cerame Fin - Feinsteinzeug - Керамогранит

	CARATTERISTICA TECNICA PHYSICAL PROPERTY CARACTERISTIQUE TECHNIQUE TECHNISCHE DATEN CARACTERÍSTICA TÉCNICA ТЕХНИЧЕСКАЯ ХАРАКТЕРИСТИКА	NORMA NORMS/NORM/ NORME/ NORMAS/ НОРМЫ	VALORE PRESCRITTO DELLA NORMA REQUIRED STANDARDS VALEUR PRESCRITE PAR LES NORMES VALORES REQUERIDOS NORMVORGABE ЗНАЧЕНИЕ, ПРЕДПИСАННОЕ НОРМОЙ	VALORI VALUES VALEURS WERTE VALORES ЗНАЧЕНИЕ
	Resistenza alla flessione Bending Strength Résistance à la flexion Biegefestigkeit Resistencia a la flexión Предел прочности при изгибе	UNI EN ISO 10545-4	$N \geq 27N / mm^2$	45,1 N / mm ²
	Resistenza al gelo Frost resistance Résistance au gel Frostwiderstandsfähigkeit Resistencia a la helada Морозостойкость	UNI EN ISO 10545-12	Nessun campione deve presentare rotture o alterazioni apprezzabili della superficie. No sample must show alterations to the surface Les échantillons ne doivent pas présenter de ruptures ou d'altérations considérables de la surface. Die Muster dürfen weder Bruch noch Schäden an der Oberfläche aufweisen. Ninguna muestra debe presentar roturas o alteraciones apreciables de la superficie Ни один из образцов не должен иметь трещин или других заметных изменений поверхности	Non gelivi Frost-proof Non gélifs Frostsicher No presentan gelivación Морозостойка

FORMATO - SIZE - FORMAT FORMAT - FORMATO - ФОРМАТ	PZ/BOX	ML/BOX	KG/ML	BOX/PALLET	ML/PALLET	KG/PALLET	EURO < 1 PALLET	EURO ≥1 PALLET
Battiscopa 8x33,3 (3 1/4"x13")	27	9	1,25	66	594	742,50	4,80	ml/m

Contributo spese imballo € 10,00/pal (netto). - Packing charges € 10,00/pal (net)



Rondine s.p.a. - Via Emilia Ovest 53/A 42048 Rubiera (RE) - Italy
+39 0522 625111 - www.ceramicarondine.it